

Self-Organized Criticality Theory of Autoimmunity

Ken Tsumiyama¹, Yumi Miyazaki¹, Shunichi Shiozawa^{1,2,3,4*}

1 Department of Biophysics, Kobe University Graduate School of Health Science, Kobe, Japan, **2** Department of Medicine, Kobe University Graduate School of Medicine, Kobe, Japan, **3** The Center for Rheumatic Diseases, Kobe University Hospital, Kobe, Japan, **4** Global Center of Excellence (GCOE), Tokyo, Japan

Abstract

Background: The cause of autoimmunity, which is unknown, is investigated from a different angle, i.e., the defect in immune ‘system’, to explain the cause of autoimmunity.

Methodology/Principal Findings: Repeated immunization with antigen causes systemic autoimmunity in mice otherwise not prone to spontaneous autoimmune diseases. Overstimulation of CD4⁺ T cells led to the development of autoantibody-inducing CD4⁺ T (*ai*CD4⁺ T) cell which had undergone T cell receptor (TCR) revision and was capable of inducing autoantibodies. The *ai*CD4⁺ T cell was induced by *de novo* TCR revision but not by cross-reaction, and subsequently overstimulated CD8⁺ T cells, driving them to become antigen-specific cytotoxic T lymphocytes (CTL). These CTLs could be further matured by antigen cross-presentation, after which they caused autoimmune tissue injury akin to systemic lupus erythematosus (SLE).

Conclusions/Significance: Systemic autoimmunity appears to be the inevitable consequence of over-stimulating the host’s immune ‘system’ by repeated immunization with antigen, to the levels that surpass system’s self-organized criticality.

Citation: Tsumiyama K, Miyazaki Y, Shiozawa S (2009) Self-Organized Criticality Theory of Autoimmunity. PLoS ONE 4(12): e8382. doi:10.1371/journal.pone.0008382

Editor: Derya Unutmaz, New York University, United States of America

Received: September 11, 2009; **Accepted:** November 30, 2009; **Published:** December 31, 2009

Copyright: © 2009 Tsumiyama et al. This is an open-access article distributed under the terms of the Creative Commons Attribution License, which permits unrestricted use, distribution, and reproduction in any medium, provided the original author and source are credited.

Funding: This work is supported by the Global Center of Excellence (GCOE) Program grant from the Ministry of Education, Culture, Sports, Science and Technology of Japan, and the Japan Science and Technology Organization. The funders had no role in study design, data collection and analysis, decision to publish, or preparation of the manuscript.

Competing Interests: The authors have declared that no competing interests exist.

* E-mail: shioz@med.kobe-u.ac.jp

Introduction

Since ‘clonal selection theory of immunity’ of F. Macfarlane Burnet and subsequent molecular biological discoveries on V(D)J recombination and the diversity and individuality of immune response, how autoimmunity arises remains unclear. Apart from the term ‘autoimmunity’ which is now ready-made, in the present study, we tried to see the pathogenesis of autoimmunity from different angle and test the integrity of immune ‘system’. The method we have chosen was to stimulate the system maximally by antigen to the levels far beyond its steady-state just like testing the capability of automobile. In a perfectly reproducible experiments in which the mice not prone to autoimmune diseases were immunized repeatedly with antigen, we have unexpectedly and surprisingly discovered that overstimulation of immune system beyond its self-organized criticality inevitably leads to systemic autoimmunity. Subsequent detailed molecular analyses revealed in the first that autoantibodies are induced not by cross reaction to antigen but by *de novo* T cell receptor (TCR) revision. Second, final maturation of effector cytotoxic T lymphocyte (CTL) *via* antigen cross-presentation is *sine qua non* for generating autoimmune tissue injury. Most importantly, we now show that autoimmunity arises not from ‘autoimmunity’, but as a natural consequence of normal immune response when stimulated maximally beyond system’s self-organized criticality.

Results

Induction of Autoantibodies

Consistent with the common observation that T cells become anergic after strong stimulation with antigen [1], we observed

that 2× immunization with staphylococcus enterotoxin B (SEB) caused SEB-reactive Vβ8⁺CD4⁺ T cells from BALB/c mice to become anergized. However, these cells recovered from anergy to divide and produce IL-2 after further immunization 8× with SEB (Figure S1A). This was accompanied by the induction of autoantibodies, including IgG- and IgM-rheumatoid factor (RF), anti-Sm antibody, and in particular, RF reactive against galactose-deficient IgG, typically found in human autoimmunity [2] (Figure 1A). Autoantibodies can also be induced by other conventional antigens, including ovalbumin (OVA) or keyhole limpet hemocyanin (KLH) (Figure S2) as long as immunizing antigen is correctly presented to T cells (Figure S1B). CD4⁺ T cells of repeatedly-immunized mice become fully matured, expressing CD45RB^{lo}, CD27^{lo} and CD122^{hi} (data not shown), and these primed CD4⁺ T cells can confer RF generation in naïve recipients following adoptive transfer (Figure 1B). The induction of autoantibodies is independent of CD8⁺ T cells or MHC class I-restricted antigen presentation for the following reasons. First, both RF and anti-dsDNA antibody can be consistently induced upon repeated immunization of β₂-microglobulin (β₂m)-deficient BALB/c mice with OVA. β₂m-deficient mice are deficient in CD8⁺ T cells, which are reduced to <0.8% of splenic T cells [3] (Figure S3). Second, the ability to induce autoantibodies was transferable from OVA-immunized BALB/c mice to β₂m-deficient mice solely *via* CD4⁺ T cells (Figure 1C). Thus, CD4⁺ T cells from repeatedly-immunized mice acquire the ability to induce autoantibodies. We refer to these as autoantibody-inducing CD4⁺ T (*ai*CD4⁺ T) cells in this communication.

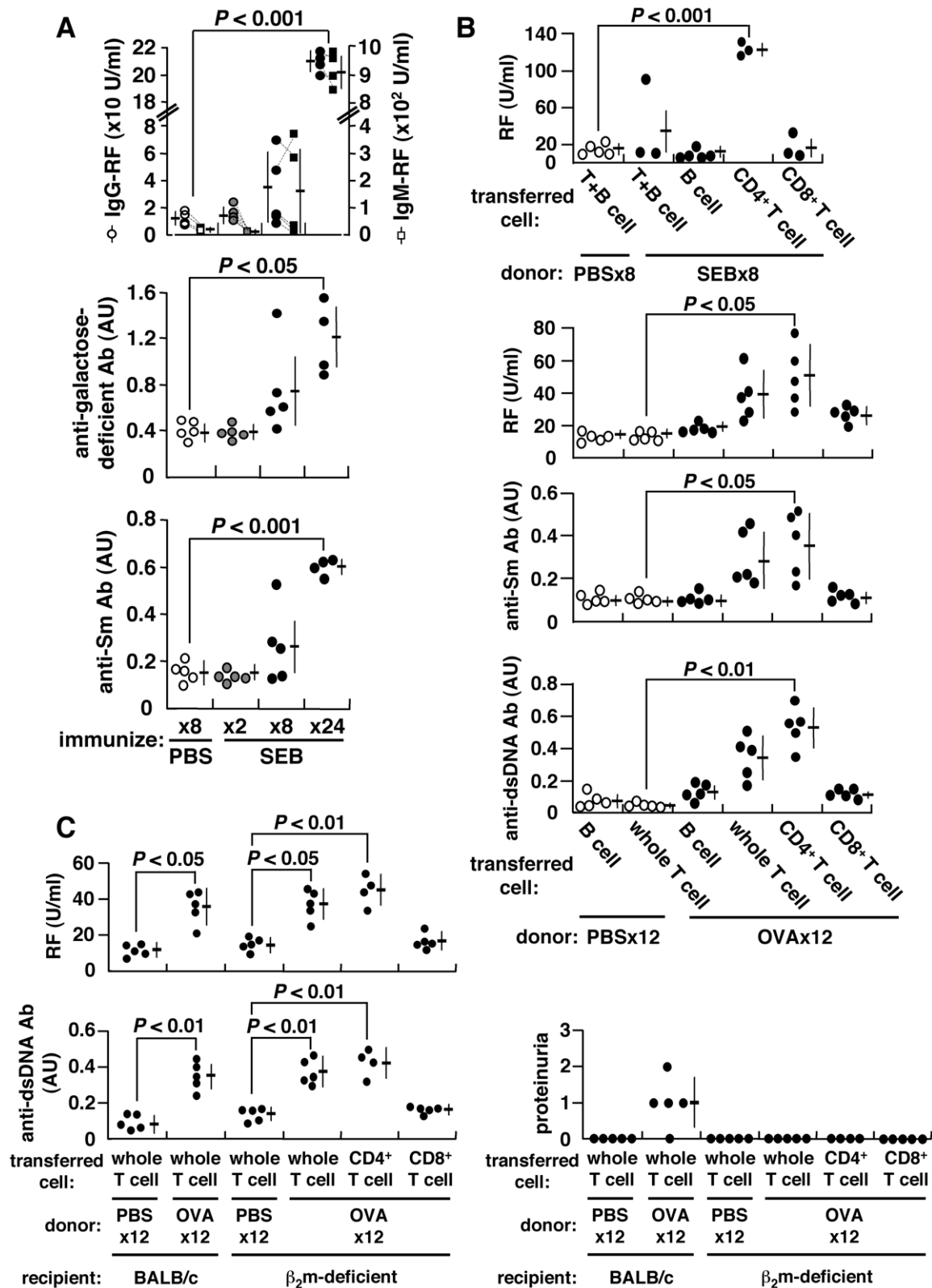


Figure 1. Induction of autoantibodies and proteinuria. BALB/c mice were repeatedly injected i.p. with 25 μ g SEB, 500 μ g OVA or PBS every 5 d. (A) Serum IgG- and IgM-RFs, anti-galactose-deficient IgG and anti-Sm antibodies were measured using ELISA. The arbitrary unit (AU) of 1.0 is equivalent to the titer obtained from sera of prototypic autoimmune MRL/lpr mice. Data from each mouse are connected by dotted lines. (B) Adoptive transfer of splenic B, T, CD4⁺ T or CD8⁺ T cells of SEB-, OVA- or PBS-immunized BALB/c mice into naïve BALB/c mice. The recipient mice were given single i.p. injection of 25 μ g SEB or 500 μ g OVA 24 h after cell transfer, and autoantibodies were measured 2 weeks later. (C) Adoptive transfer of cells from OVA-immunized BALB/c mice into β_2m -deficient mice. doi:10.1371/journal.pone.0008382.g001

Mechanism of Autoantibody Induction

To further clarify the characteristics of *ai*CD4⁺ T cells, we examined their TCR repertoire by spectratyping of their complementarity determining region 3 (CDR3) [4]. Combinatorial assessment of V β and J β showed that the CDR3 length profiles of CD4⁺ splenocytes in mice immunized either 8 \times with PBS or 2 \times with SEB fit a normal Gaussian curve, typical of a diverse and unbiased TCR repertoire (Figure 2A). However, splenocytes, but

not thymocytes, from mice immunized 8 \times with SEB showed skewed length profiles, suggesting that TCR revision was in progress at periphery of the spleen. Genes encoding components of the V(D)J recombinase complex were specifically re-expressed in mice immunized 8 \times with SEB, including the recombination-activating genes 1 and 2 (RAG1/2), terminal deoxynucleotidyl transferase (TdT) and surrogate TCR α chain (pT α) [5] (Figure 2B). The RAG1 gene is expressed *in vivo* after immunization 8 \times with

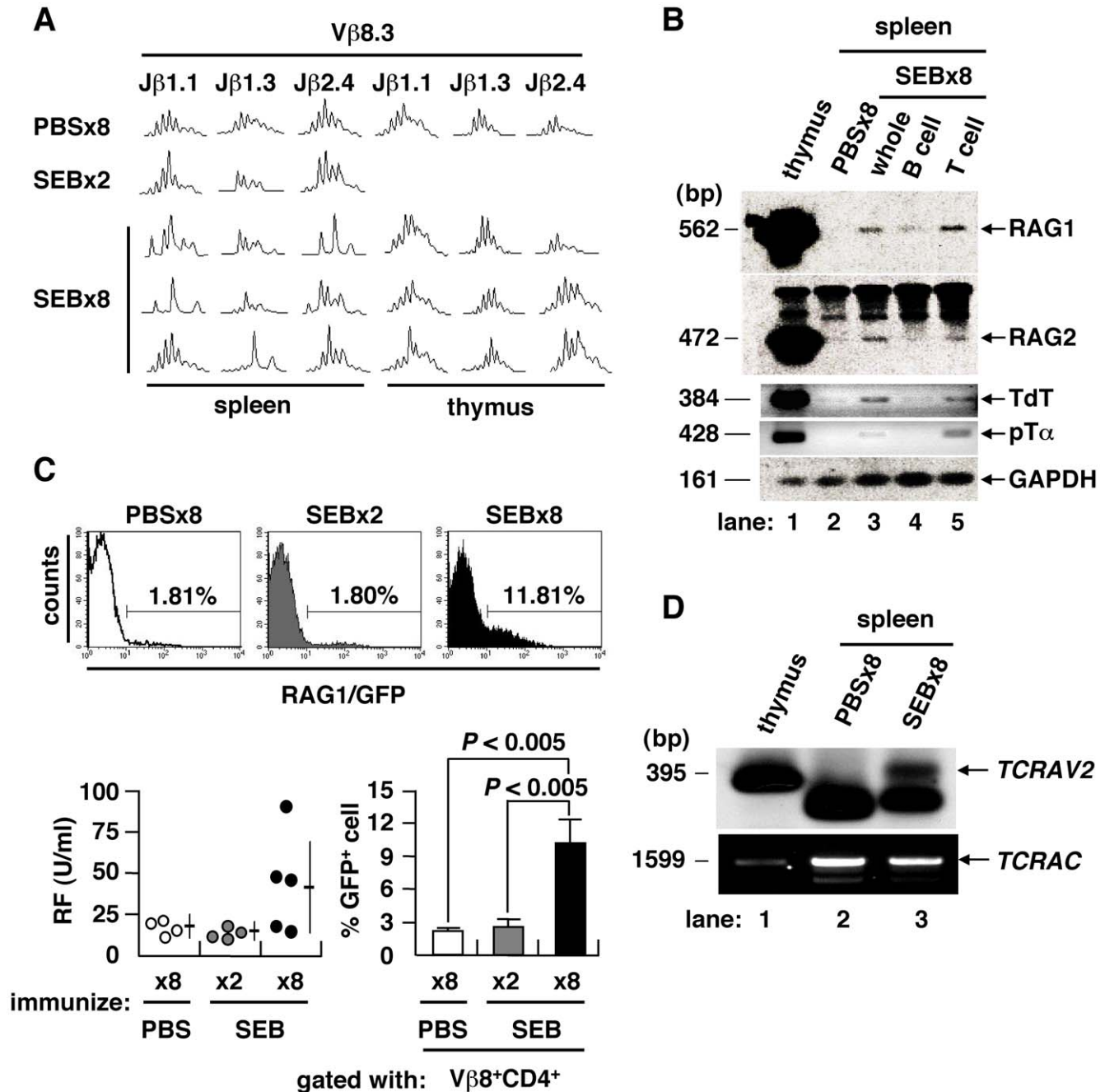


Figure 2. TCR revision upon repeated immunization with antigen. (A) TCR CDR3 length profiles of mice immunized 8 \times with PBS, 2 \times or 8 \times with SEB. TCR repertoire of splenic CD4⁺ T cell was skewed only after immunization 8 \times with SEB. (B) Expression of V(D)J recombinase complex and related molecules in the spleen of PBS- or SEB-injected BALB/c mice. (C) GFP⁺ cells in the V β 8⁺CD4⁺ T population of *rag1/gfp* knock-in mice. IgG-RF as induced in *rag1/gfp* knock-in mice after immunization 8 \times with SEB (lower left). The GFP⁺ T cell fraction was also increased among V β 8⁺CD4⁺ T cells (mean \pm SD, 4–5 mice/group). (D) TCR α chain revision in the spleen of mice immunized 8 \times with SEB was determined by LM-PCR detection of dsDNA breaks at the RSS flanking the TCRAV2, with PCR-amplified TCR α constant region (TCRAC) as a DNA quality control. doi:10.1371/journal.pone.0008382.g002

SEB in *rag1/gfp* knock-in mice [6] (Figure 2C). In these mice, serum RF was increased in conjunction with an increase of GFP-expressing $V\beta 8^+CD4^+$ T cells in the spleen. To directly prove that V(D)J recombination took place at the periphery in spleen, we used ligation-mediated PCR (LM-PCR) to detect blunt-end DNA fragments harboring a rearranged coding V region flanked by recombination signal sequences (RSS) [7,8]. We identified rearranged intermediates corresponding to the TCR α variable region 2 (*TCRAV2*) in the splenocytes of mice immunized 8 \times with SEB (Figure 2D). These findings indicate that repeated immunization with conventional antigen can induce the generation of *ai*CD4 $^+$ T cells which have undergone TCR revision and are capable of stimulating B cells [9]. This observation is in line with previous findings showing that such somatic mutations occur often in lymphocytes, a process which is considered to be a major stochastic element in the pathogenesis of autoimmunity [10,11]. Thus, overstimulation of CD4 $^+$ T cells by repeated immunization with antigen and induction of full maturation inevitably leads to the generation of *ai*CD4 $^+$ T cells which have undergone TCR revision and are capable of inducing autoantibodies. Importantly, the present study shows that such *ai*CD4 $^+$ T cells are induced by *de novo* TCR revision but not by cross-reaction to antigen.

Induction of Autoimmune Tissue Injury

Repeated immunization with OVA can also lead to autoimmune tissue injury and the production of autoantibodies reactive against IgG, Sm and dsDNA (Figure 3 and Figure S2A). Serum immune complex (IC), proteinuria, and the deposition of IC and OVA in the kidney were noted in mice immunized 12 \times with OVA (Figure 3A). Typical diffuse proliferative glomerular lesions were seen in the kidney, and these glomeruli were infiltrated with CD8 $^+$ T cells. These observations resemble the clinical features observed in lupus patients, who typically exhibit an increase in CD8 $^+$ T cells in the peripheral blood and infiltration of CD8 $^+$ T cells in kidney [12,13]. Immunization of mice 12 \times with OVA led to re-expression of the V(D)J recombinase complex and enlargement of the spleen (Figure S4A), and an increase in anti-dsDNA antibody, which is uniquely linked to autoimmune tissue injury in lupus nephritis [14] (Figure S2A). Pathological findings included diffuse membranous (wire-loop) and/or proliferative glomerulonephritis in the kidney (Figure 3A), infiltration of plasma cells around hepatic bile ducts (Figure S4B), enlarged lymphoid follicles with marked germinal center in spleen (Figure S4B), occasional lymphocyte infiltration into the salivary glands (data not shown), lymphoid cell infiltration into the thyroid, and perivascular infiltration of neutrophils and macrophages into the skin dermis of the auricle (Figure S4B). The lupus band test, diagnostic of SLE, was positive in the skin at the epidermal-dermal junction (Figure 3B).

Mechanism of Autoimmune Tissue Injury

It has been shown previously that IFN γ is increased in association with autoimmune tissue injury [15–17]. Consistent with this, we found that the number of IFN γ^+ CD8 $^+$ T cells, but not regulatory T or T helper 17 cells, was increased following immunization 12 \times with OVA (Figure 4A and data not shown). We also observed an expansion of IFN γ -producing effector/memory CD8 $^+$ T cells, which are necessary for adaptive immunity [18] (Figure 4A). These IFN γ -producing CD8 $^+$ T cells were observed to have infiltrated into OVA-deposited glomeruli of OVA-immunized mice (Figure 3A). CD8 $^+$ T cells are required for tissue injury based on the following observations. First, the transfer of CD8 $^+$ T cells can induce renal lesions in mice (Figure 4B), as well as the generation of new IFN γ^+ CD8 $^+$ T cells in the spleens of

recipient mice following cell transfer (Figure S5). Second, autoimmune tissue injury is not induced by the transfer of CD8 $^+$ T cells from OVA-immunized wild-type mice into β_2m -deficient mice (Figure 1C). And finally, CD8 $^+$ T cell transfer must be accompanied by at least a 1 \times booster immunization with OVA to induce autoimmune tissue injury in the recipient mice (Figure S6). The findings indicate that full-matured, IFN γ -producing effector CD8 $^+$ T cells are required for the induction of autoimmune tissue injury, provided that the relevant antigen is correctly presented on the target organs. These are well-established characteristic of CTL and not novel. We show, however, that (i) CTL is induced through an immune, but not ‘autoimmune’, process, and that (ii) autoimmune tissue injury inevitably occurs when CD8 $^+$ T cells are overstimulated to become matured effector CTLs. The latter means that regardless of how CTL is induced, the consequence of CTL over-induction is immune tissue injury.

Antigen Cross-Presentation

We next show that antigen cross-presentation is required for the induction of CTL and tissue injury. To test this, we co-cultured OVA-pulsed dendritic cells (DC) from mice immunized 12 \times with OVA together with T cells from OVA-TCR transgenic DO11.10 mice exclusively expressing OVA-reactive TCR [19]. We show that OVA-reactive DO11.10 CD8 $^+$ T cells are activated upon co-culture with OVA-pulsed DCs (Figure 4C and Figure S7). Further, autoimmune tissue injury and the increase in IFN γ^+ CD8 $^+$ T cells, but not of autoantibody generation, were both abrogated by adding chloroquine (CQ), an inhibitor of antigen cross-presentation (Figure 4C). This indicates that antigen cross-presentation is required for the expansion of IFN γ -producing CD8 $^+$ T cells and autoimmune tissue injury.

*ai*CD4 $^+$ T Cell Helps CD8 $^+$ T Cell to Induce Tissue Injury

Since CTL appear to play a rather passive role in autoimmunity, we next studied whether or not *ai*CD4 $^+$ T cell help is required for the induction of autoimmune tissue injury. Since anti-CD4 treatment almost abrogates generation of IFN γ -producing CD8 $^+$ T cell and autoimmune tissue injury in OVA-immunized BALB/c mice (Figure S8), to test whether this CD4 $^+$ T cell-mediated help is mediated by *ai*T cells or antigen-specific T cells, we have transferred CD4 $^+$ T cells from mice immunized 12 \times with KLH into CD4 $^+$ T-depleted BALB/c mice immunized 8 \times with OVA (Figure 4D). Because full-matured IFN γ^+ CTLs do not develop with less than 8 \times immunization with OVA (Figure S9), this experiment can test the ability of *ai*CD4 $^+$ T cells that have undergone TCR revision to promote the maturation of OVA-specific CTL. The result showed that both autoimmune tissue injury and OVA-specific IFN γ^+ CD8 $^+$ T cells arose in these mice after transfer, indicating that *ai*CD4 $^+$ T cells with *de novo* TCR revision are required for the maturation of CD8 $^+$ T cell and autoimmune tissue injury (Figure 4D).

Discussion

The present findings are consistent with the current consensus that CD4 $^+$ T cells normally die *via* activation-induced cell death (AICD) after repeated exposure to a single antigen, while naive CD4 $^+$ T cells having a ‘cross-reactive’ TCR with lower affinity can be activated through repeated exposure to the same antigen and survive due to weak TCR signaling, ultimately acquiring autoreactivity [20]. We show here, however, that *ai*CD4 $^+$ T cells are induced not by cross-reaction, but by *de novo* TCR revision. The *ai*CD4 $^+$ T cells thus generated induce not only autoantibodies but also full-maturation of CD8 $^+$ T cells leading to autoimmune

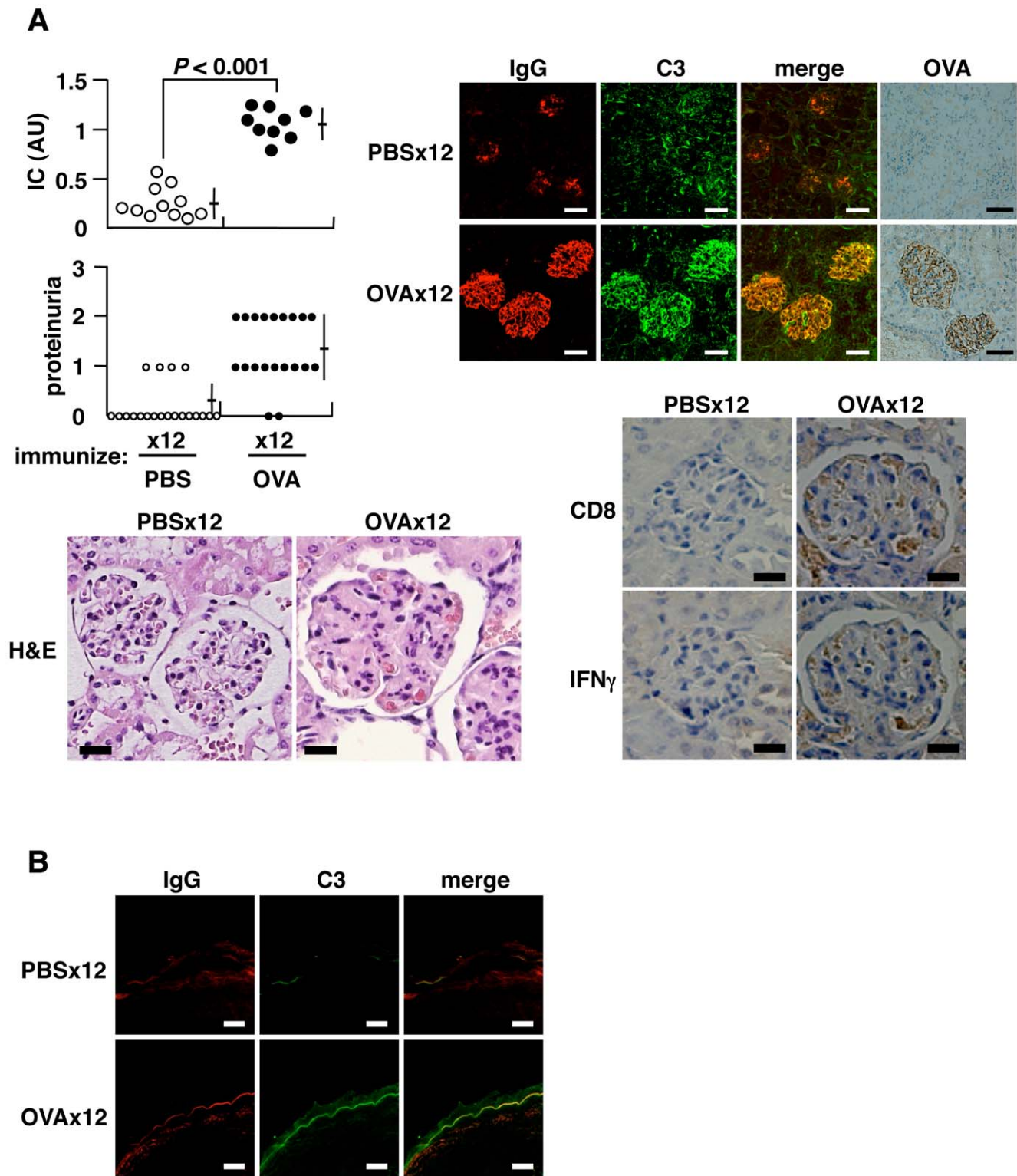


Figure 3. Induction of autoimmune tissue injury. BALB/c mice were injected i.p. with 500 μ g OVA every 5 d. (A) Serum IC measured 2 d after final immunization, expressed as AU. Proteinuria assessed 9 d after final immunization: grades 1, 2 and 3 represent 30–100 mg/dl, 100–300 mg/dl and 300–1000 mg/dl of urinary protein, respectively (upper left). Representative histopathology of kidneys from mice immunized 12 \times with PBS or OVA (lower left) (H&E staining, bar = 20 μ m; original magnification \times 400): glomerular expansion with cellular infiltration including eosinophils seen under the same magnification. Immunohistochemistry for deposited IC, IgG, C3 and OVA (upper right) (bar = 50 μ m; original magnification \times 200), and cells infiltrated into glomeruli (bar = 20 μ m; original magnification \times 300), stained in serial tissue sections using anti-CD8 α (53–6.7) and anti-IFN γ (R4-6A2) monoclonal antibodies, in the specimens of mice immunized 12 \times with OVA (lower right). (B) Lupus band test stained with anti-IgG and anti-C3 antibodies (bar = 20 μ m; original magnification \times 400).
doi:10.1371/journal.pone.0008382.g003

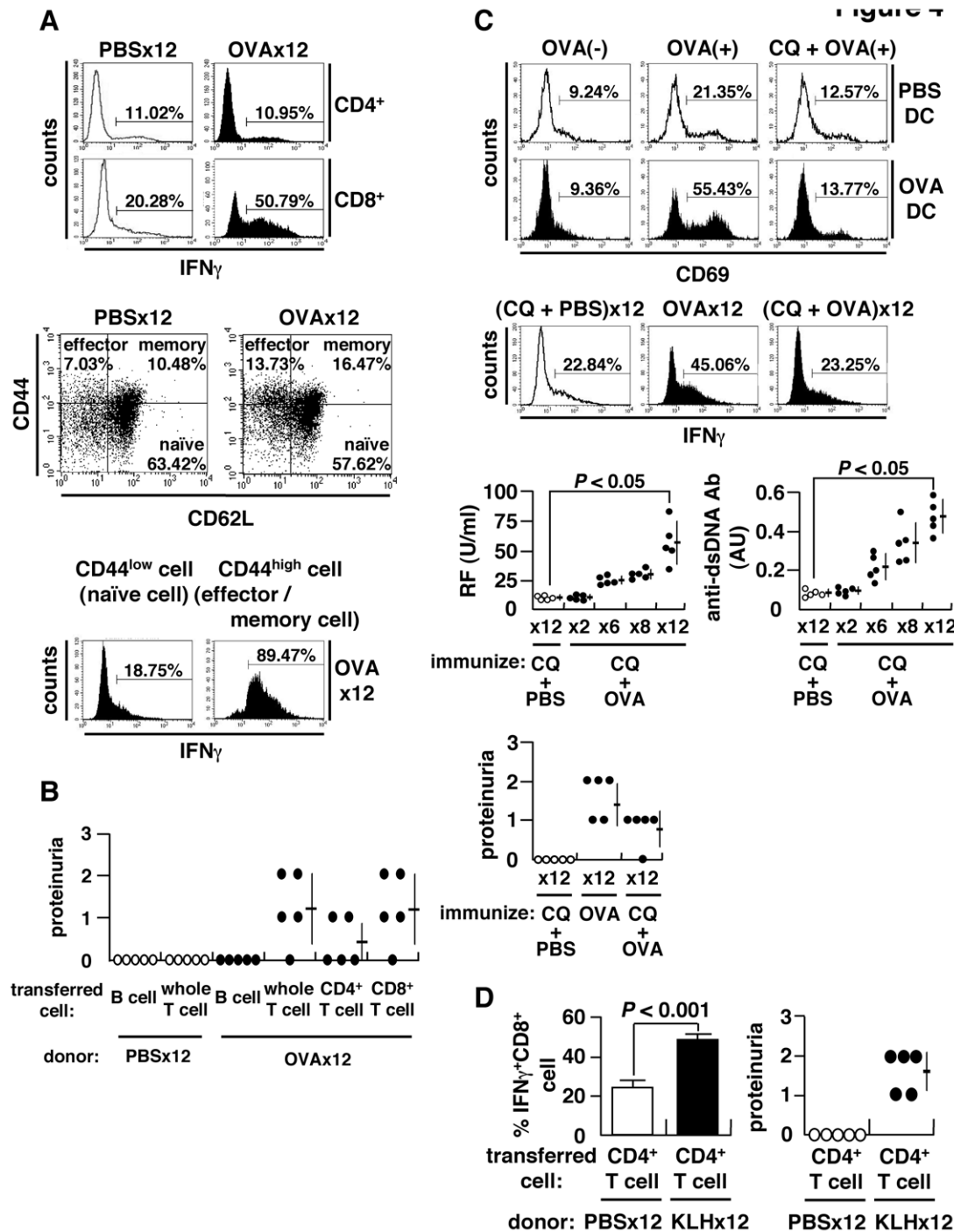


Figure 4. Expansion of CD8⁺ T cells and antigen cross-presentation. (A) Spleen cells stimulated with 50 ng/ml phorbol myristate acetate (PMA) and 500 ng/ml ionomycin for 4 h in the presence of brefeldin A (10 μg/ml) and stained for intracellular IFN γ (upper). Subsets of CD8⁺ T cells categorized into naïve (CD44^{low}CD62L^{high}), effector (CD44^{high}CD62L^{low}), and memory (CD44^{high}CD62L^{high}) fractions (middle). Flow cytometry of IFN γ ⁺ cells within naïve or effector/memory CD8⁺ T cell populations. Spleen cells were separated into naïve (CD44^{low}) and effector/memory (CD44^{high}) cells using CD44 MACS beads, and IFN γ ⁺ cells within the CD8⁺ T population was evaluated (lower). (B) Adoptive transfer of splenocytes of OVA-immunized BALB/c mice into naïve recipients. The recipients were injected with 500 μg OVA 24 h after cell transfer, and proteinuria examined 2 weeks later. (C) Cross-presentation of OVA to CD8⁺ T cells. Splenic CD11c⁺ DC from OVA-immunized or control mice were incubated in the presence (OVA(+)) or absence (OVA(-)) of 1 mg/ml OVA with or without chloroquine (CQ) (20 μg/ml) for 3 h, followed by a co-culture with KJ1-26⁺CD8⁺ T cells of DO11.10 transgenic mice for 24 h to examine surface expression of CD69 (upper). Inhibition of cross-presentation *in vivo* by administration of 250 μg CQ per mouse 3 h prior to immunization with OVA or PBS. IFN γ ⁺CD8⁺ T cells (middle), autoantibodies and proteinuria (lower) after 12 \times immunization. (D) Requirement of autoantibody-inducing CD4⁺ T cells for CD8⁺ T cell-mediated autoimmune tissue injury. BALB/c mice were immunized 12 \times with KLH, and CD4⁺ T cells were isolated using MACS beads. Cells were transferred into the anti-CD4 antibody-treated recipient mice immunized 8 \times with OVA. Percent matured CTL, i.e., IFN γ ⁺CD8⁺ T cells, and proteinuria were measured 2 weeks after booster immunization 1 \times with KLH.

doi:10.1371/journal.pone.0008382.g004

tissue injury akin to human SLE. Thus, induction of *ai*CD4⁺ T cells is a critical step, and subsequent induction of effector CTL is a critical next step in the development of autoimmunity [21,22]. The question of how autoimmunity is triggered can therefore be deduced to the quantitative response of host against immunizing antigen, i.e., the ability of host to present and/or cross-present antigen. It then follows that the ability of certain antigens such as measles virus to cause autoimmunity may be due to their ability, in conjunction with its ability to present antigen, to overstimulate CD4⁺ and/or CD8⁺ T cells of certain hosts beyond integrity of their immune system. Living organisms are constantly exposed to a broad range of environmental antigens, as exemplified by the recent re-emergence of measles virus infection among a subpopulation of Japanese young adults who were not vaccinated against the virus. We therefore conclude that systemic autoimmunity necessarily takes place when host's immune 'system' is overstimulated by external disturbance, i.e., repeated exposure to antigen, to the levels that surpass system's self-organized criticality, and propose here 'self-organized criticality theory' explaining the cause of autoimmunity.

Materials and Methods

Ethics Statement

This study was approved by the Institutional Animal Care and Use Committee and carried out according to the Kobe University Animal Experimental Regulations.

Reagents

APC (allophycocyanin)-conjugated antibody against CD4 (RM4-5), and PE-conjugated antibodies against CD62L (MEL-14), CD69 (H1.2F3) and were purchased from BioLegend (San Diego, CA); FITC-conjugated antibodies against CD44 (IM7.8.1) and DO 11.10 clonotypic TCR (KJ1-26) and PE-conjugated rat IgG1 isotype control from CALTAG Laboratories (Burlingame, CA); PE-Cy5 (phycoerythrin-cyanin 5)-conjugated antibody against CD8 α (53-6.7), PE-conjugated antibodies against V β 8 TCR (F23.1) and IFN γ (XMG1.2) from BD PharMingen (San Diego, CA).

Animal Studies

Animal studies with BALB/c female mice (Japan SLC, Inc., Hamamatsu, Japan) and DO11.10 TCR transgenic mice [19] (Jackson Laboratory, Bar Harbor, ME), β ₂m-deficient mice [3] and *rag1/gfp* knock-in mice [6] of BALB/c background were performed with the approval of the Institutional Review Board. Mice (8 weeks-old) were immunized with 25 μ g SEB (Toxin Technologies, Sarasota, FL), 500 μ g OVA (grade V; Sigma, St. Louis, MO), 100 μ g KLH (Sigma) or PBS by means of i.p. injection every 5 d.

Frozen sections of kidney and dermis were stained for C3, IgG or OVA using goat anti-C3 (Bethyl laboratories, Inc., Montgomery, TX) and Alexa Fluor 488-conjugated anti-goat IgG antibodies (Molecular Probes, Eugene, OR), Alexa Fluor 594-conjugated anti-mouse IgG antibody (Molecular Probes), or rabbit anti-OVA antibody (Sigma). For CD8 or IFN γ staining, paraffin-embedded sections of kidney were stained with rat antibodies against CD8 α (53-6.7; BD PharMingen) or IFN γ (R4-6A2; BD PharMingen), followed by reaction with VECTASTAIN Elite ABC rat IgG kit (Vector, Burlingame, CA).

To detect intracellular IFN γ , cells (1×10^6 /ml) were stimulated with 50 ng/ml phorbol myristate acetate (PMA; Sigma) and 500 ng/ml ionomycin (Sigma) in the presence of brefeldin A (10 μ g/ml; Sigma). After 4 h, cells were stained with anti-CD8

antibody, followed by fixation with 2% formaldehyde, permeabilization with 0.5% saponin (Sigma) and stained for IFN γ .

For adoptive cell transfer, B, T, CD4⁺ T and CD8⁺ T cells were isolated from spleens to >90% purity using MACS beads (Miltenyi Biotec, Germany). The cells were transferred into naive BALB/c or β ₂m-deficient mice *via* i.p. (5×10^6 /mouse) or i.v. (2.5×10^7 /mouse) injection. The recipients received a single i.p. injection of 25 μ g SEB or 500 μ g OVA 24 h after cell transfer, and sera, urine and organ of recipients were studied 2 weeks afterwards.

BALB/c mice were injected i.p. with 200 μ g anti-CD4 antibody (GK1.5; BioLegend) to deplete CD4⁺ T cell 24 h after immunization 8 \times with OVA. Four days later, CD4⁺ T cells from mice immunized 12 \times with KLH were transferred to the CD4⁺ T-depleted mice. The recipient mice received a single i.p. injection of 100 μ g KLH 24 h after the cell transfer.

Assay for Mediators

Sera were assayed for anti-Sm antibody using Sm antigen (ImmunoVision, Springdale, AR), RF (Shibayagi Co., Gunma, Japan), RF for galactose-deficient IgG (Eisai Co., Ltd., Tokyo, Japan) and anti-dsDNA antibody using dsDNA (Worthington Biochemical Co., Lakewood, NJ) after digestion by S1 nuclease (Promega, Madison, WI). Serum IC was detected using goat anti-C3 antibody (Bethyl Lab.).

CDR3 Length Spectratyping

cDNAs from thymocytes and CD4⁺ splenocytes were subjected to PCR amplification using C β - and V β 8-specific primers. Amplified products were subjected to run-off reactions using three fluorophore-labeled J β primers, J β 1.1, J β 1.3 and J β 2.4, and analyzed by GeneScan software (Perkin-Elmer Applied Biosystems, Emeryville, CA) [4].

RT-PCR

Total RNA was reversely transcribed to cDNA and amplified by PCR [23]. The products were fractionated by electrophoresis and transferred to nylon membranes (Roche Diagnostics, Mannheim, Germany). The membranes were hybridized to fluorescein end-labeled probes and visualized by alkaline phosphatase (ALP)-labeled anti-fluorescein antibody and Gene Images CDP-Star chemiluminescence reaction (Amersham Pharmacia Biotech, Piscataway, NJ). The primers and probes were: 5'-CCAAGCTGCAGACATTC-TAGCACTC-3' (forward), 5'-CAACATCTGCCTTCACGTCG-ATCC-3' (reverse) and 5'-AACATGGCTGCCTCCTTGCCG-TCTACCCT-3' (probe) for RAG1 [24]; 5'-CACATCCACAAG-CAGGAAGTACAC-3' (forward), 5'-GGTTCAGGGACATCT-CCTACTAAG-3' (reverse) and 5'-GCAATCTTCTCTAAAGA-TTCCTGCTACCT-3' (probe) for RAG2 [24]; 5'-GAACAAC-TCGAAGAGCCTTCC-3' (forward), 5'-CAAGGGCATCCGT-GAATAGTTG-3' (reverse) and 5'-ATTCCGGTCACCCACATT-GTGGCAGAGAAC-3' (probe) for TdT; 5'-CAACTGGGTCAT-GCTTCTCC-3' (forward), 5'-TGGCTGTCTCGAAGATTCCTC-3' (reverse) and 5'-CCGTCTCTGGCTCCACCCATCACACTG-CT-3' (probe) for pT α .

LM-PCR

DNA (1 μ g) was ligated to 20 μ M BW linker using T4 ligase (Takara Bio Inc., Shiga, Japan) [25]. Primary PCR was performed using 200 ng ligated DNA, BW-1HR primer (5'-CCGGGA-GATCTGAATTTCGTGT-3') [24], primer specific for 3' flanking sequence of *TCRA1V2* (5'-AGATGATACAGAGACAAAATGT-GAGC-3') and 2 U of AmpliTaq Gold DNA polymerase (Applied

Biosystems, Foster City, CA). A second PCR was performed using 1 μ l of the first PCR product (diluted 1/100), BW-1HR, and nested primer specific for 3' flanking sequence of *TCRAV2* (5'-TATTGTG-GATGCTAACAAGTGCTTTC-3'). Amplified DNA was transferred to membranes and visualized using fluorescein end-labeled probe specific for *TCRAV2* (5'-TAACATAAGAATGCACCGCT-TACACC-3') and ALP-labeled anti-fluorescein antibody. Primers for control *TCRAC* region were amplified using the primers 5'-CAGAACCCAGAACCTGCTGTG-3' and 5'-ACGTGGCAT-CACAGGGAA-3'. Nomenclature of the *TCRA* gene segments was according to the ImMunoGeneTics (IMGT) database (<http://imgt.cines.fr>).

Antigen Cross-Presentation

OVA-reactive CD8⁺ T cells were isolated from spleens of DO 11.10 mice using MACS beads (Miltenyi Biotec). CD11c⁺ DCs (4×10^5 /well) were isolated using MACS beads (Miltenyi Biotec) and incubated with 1 mg/ml OVA for 3 h, then co-cultured with DO11.10 CD8⁺ T (KJ1-26⁺CD8⁺) cells (2×10^5 /well) for 24 h, and the expression of CD69 on DO11.10 CD8⁺ T cells was examined. IL-2 and IFN γ in culture supernatants were measured by ELISA (Biosource, Camarillo, CA).

To inhibit cross-presentation, mice were immunized *in vivo* with 250 μ g of chloroquine (Sigma) 3 h prior to immunization with 500 μ g OVA or PBS every 5 d. Presence of autoantibodies was analyzed 2 d after each immunization, and proteinuria and IFN γ ⁺CD8⁺ T cells were examined 9 d after the final immunization.

Statistical Analysis

Statistical analyses were performed using Student's *t* test, and the data are expressed as the mean \pm SD.

Supporting Information

Figure S1 Induction of autoantibodies depends on correct presentation of antigen to T cells. (A) BALB/c mice were repeatedly injected i.p. with 25 μ g of SEB or PBS every 5 d. Sorted V β 8⁺CD4⁺splenocytes obtained 9 d after the final immunization were stimulated *in vitro* with plate-bound 2 μ g/ml anti-CD3 (145-2C11; Cederlane, Ontario, Canada) and 5 μ g/ml anti-CD28 (37.51; BD PharMingen) antibodies for 24 h. Culture supernatant assayed for IL-2 (mean \pm SD, 5 mice/group), or the cells were labeled with carboxyfluorescein diacetate succinimidyl ester (CFSE; Molecular Probes) and further cultured for 72 h followed by flow cytometry. (B) Requirement of correct antigen presentation for induction of RF. Induction of RF after immunization 8 \times with SEB in B10.D2 and BALB/c mice (efficient in presenting SEB) and in C57BL/6 (B6) mice (inefficient in presenting SEB).

Found at: doi:10.1371/journal.pone.0008382.s001 (1.17 MB TIF)

Figure S2 Generation of autoantibodies after repeated immunization with antigen. (A) The 8 week-old BALB/c mice were injected i.p. with 500 μ g OVA every 5 d, and serum RF and anti-Sm, and anti-dsDNA antibodies (upper), and serum IgG and anti-OVA antibodies (lower) were quantified by ELISA 2 d after respective immunization. An arbitrary unit (AU) of 1.0 is the equivalent titer in sera of MRL/lpr mice. Serum IgG was quantified by ELISA (Bethyl Laboratories), and anti-OVA antibody was quantified using mouse anti-OVA monoclonal antibody (OVA-14; Sigma) as reference. (B) BALB/c mice were immunized i.p. with 100 μ g KLH every 5 d. Serum RF and anti-Sm antibodies were measured by ELISA 2 d after respective

immunization, AU 1.0 = equivalent detected in sera of MRL/lpr mice.

Found at: doi:10.1371/journal.pone.0008382.s002 (1.00 MB TIF)

Figure S3 Induction of autoantibodies in CD8⁺ T cell-deficient mice. β_2 m-deficient mice were immunized with 500 μ g OVA *via* i.p. injection every 5 d, and IgG-RF, anti-dsDNA antibody, and proteinuria were measured.

Found at: doi:10.1371/journal.pone.0008382.s003 (0.69 MB TIF)

Figure S4 Expression of V(D)J recombinase complex and histopathology of OVA-immunized BALB/c mice. (A) Expression of V(D)J recombinase complex after immunization 12 \times with OVA as detected using RT-PCR (upper left). GFP⁺ cells in the CD4⁺ T cell of *rag1/gfp* knock-in mice after immunization 12 \times with OVA (lower left). Appearance and weights of spleens and a representative low-magnification view of the spleens from PBS- and OVA-immunized mice (right, mean \pm SD, 9 mice/group). Enlarged lymphoid follicles with marked germinal centers were seen in mice immunized with OVA (H&E staining, bar = 200 μ m; original magnification \times 20). (B) Representative renal and extra-renal histopathology in the mice immunized 12 \times with OVA. A wire-loop-like massive membranous glomerulonephritis in the kidney (upper left) (PAS staining, bar = 20 μ m; original magnification \times 400), plasma cell infiltrates around bile ducts (upper middle) (bar = 20 μ m; original magnification \times 400), expansion of lymphoid follicle in the white pulp of spleen (upper right) (bar = 200 μ m; original magnification \times 40), focal infiltrates of mononuclear cells to thyroid (lower left) (bar = 50 μ m; original magnification \times 100), and diffuse infiltration of inflammatory cells into auricular subcutaneous tissue (upper right) (bar = 50 μ m; original magnification \times 200).

Found at: doi:10.1371/journal.pone.0008382.s004 (6.01 MB TIF)

Figure S5 The *de novo* generation of IFN γ -producing CD8⁺ T cells in recipient mice after cell transfer. Percentage of IFN γ ⁺ cells within the CD8⁺ T population of the recipient mice was examined 2 weeks after cell transfer (mean \pm SD, 5 mice/group).

Found at: doi:10.1371/journal.pone.0008382.s005 (0.73 MB TIF)

Figure S6 Transfer of the ability to induce anti-ds DNA antibody or tissue injury by transfer of CD4⁺ or CD8⁺ T cells, respectively. Adoptive transfer of cells from OVA-immunized mice into naïve BALB/c mice, with or without 1 \times booster injection of OVA (500 μ g, 24 h post-transfer). Autoantibodies and proteinuria measured 2 weeks later.

Found at: doi:10.1371/journal.pone.0008382.s006 (0.70 MB TIF)

Figure S7 Antigen-specific activation of T cells and the expression of MHC class I on DC. (A) Spleen cells were cultured with or without 1 mg/ml of OVA for 24 h, and the expression of CD69 on CD4⁺ T or CD8⁺ T cells was examined by flow cytometry. (B) DC from PBS- or OVA-immunized mice (PBS DC or OVA DC) were incubated in the presence or absence of chloroquine (CQ) (20 μ g/ml) for 2 h and OVA (1 mg/ml) for 3h. OVA- and/or CQ-pulsed DCs were stained with biotin-conjugated anti-H-2k^d antibody (SF1-1.1; BD PharMingen) and PE-conjugated streptavidin (BioLegend).

Found at: doi:10.1371/journal.pone.0008382.s007 (1.62 MB TIF)

Figure S8 Requirement of CD4⁺ T cell help for inducing autoimmune tissue injury. The mice were depleted of CD4⁺ T cells by treatment with 200 μ g anti-CD4 antibody (Ab) (GK1.5; BioLegend) 24 h prior to 6 \times , 9 \times and 12 \times immunization with OVA. Control mice were injected with 200 μ g rat IgG (CALTAG Lab.). (A) A representative flow cytometry plot showing that CD4⁺ T cells were depleted to $5.56 \pm 2.30\%$ in the spleen and

3.42±1.02% in peripheral blood mononuclear cells (PBMC) 9 d after 3rd treatment with anti-CD4 Ab. (B) Mice were immunized 12× with OVA with or without adding anti-CD4 antibodies, and the number of IFN γ ⁺ cells within the CD8⁺ T population (upper and lower left) (mean ± SD, 5 mice/group) and proteinuria (lower right) were evaluated.

Found at: doi:10.1371/journal.pone.0008382.s008 (2.02 MB TIF)

Figure S9 Study on the requirement of autoantibody-inducing CD4⁺ T cells for autoimmune tissue injury. Neither OVA-specific matured IFN γ ⁺CD8⁺ T cells or autoimmune tissue injury were observed until BALB/c mice were immunized at least 10× with OVA. The percent splenic IFN γ ⁺CD8⁺ T cells (left, mean ± SD, 4 or 5 mice/group) and proteinuria (right) were examined after immunization 6×, 8×, 10× and 12× with OVA.

Found at: doi:10.1371/journal.pone.0008382.s009 (0.67 MB TIF)

References

- Kawabe Y, Ochi A (1990) Selective anergy of V β 8⁺, CD4⁺ T cells in staphylococcus enterotoxin B-primed mice. *J Exp Med* 172: 1065–1070.
- Parekh RB, Dwek RA, Sutton BJ, Fernandes DL, Leung A, et al. (1985) Association of rheumatoid arthritis and primary osteoarthritis with changes in the glycosylation pattern of total serum IgG. *Nature* 316: 452–457.
- Koller BH, Marrack P, Kappler JW, Smithies O (1990) Normal development of mice deficient in β_2 M, MHC class I proteins, and CD8⁺ T cells. *Science* 248: 1227–1230.
- Pannetier C, Cochet M, Darche S, Casrouge A, Zoller M, et al. (1993) The size of the CDR3 hypervariable regions of the murine T-cell receptor β chains vary as a function of the recombined germ-line segments. *Proc Natl Acad Sci U S A* 90: 4319–4323.
- Kallenbach S, Doyen N, Fanton d'Andon M, Rougeon F (1992) Three lymphoid-specific factors account for all junctional diversity characteristics of somatic assembly of T-cell receptor and immunoglobulin genes. *Proc Natl Acad Sci U S A* 89: 2799–2803.
- Kuwata N, Igarashi H, Ohmara T, Aizawa S, Sakaguchi N (1990) Absence of expression of RAG1 in peritoneal B-1 cells detected by knocking into RAG1 locus with green fluorescent protein gene. *J Immunol* 163: 6355–6359.
- Fugmann SD, Lee AI, Shockett PE, Vitell JJ, Schatz DG (2000) The RAG proteins and V(D)J recombination: complexes, ends, and transposition. *Ann Rev Immunol* 18: 495–527.
- Schissel M, Constantinescu A, Morrow T, Baxter M, Peng A (1993) Double-strand signal sequence breaks in V(D)J recombination are blunt, 5'-phosphorylated, RAG-dependent, and cell cycle regulated. *Genes Dev* 7: 2520–2532.
- Duty JA, Szodoray P, Zheng NY, Koelsch KZ, Zhang Q, et al. (2009) Functional anergy in a subpopulation of naive B cells from healthy humans that express autoreactive immunoglobulin receptors. *J Exp Med* 206: 139–151.
- Goodnow CC (2007) Multistep pathogenesis of autoimmune disease. *Cell* 130: 25–35.
- Han JH, Akira S, Calame K, Beutler B, Selsing E, et al. (2007) Class switch recombination and somatic hypermutation in early mouse B cells are mediated by B cell and Toll-like receptors. *Immunity* 27: 64–75.
- Blanco P, Pitard V, Viallard JF, Taupin JL, Pellegrin JL, et al. (2005) Increase in activated CD8⁺ T lymphocytes expressing perforin and granzyme B correlates with disease activity in patients with systemic lupus erythematosus. *Arthritis Rheum* 52: 201–211.
- Couzi L, Merville P, Deminiere C, Moreau JF, Combe C, et al. (2007) Predominance of CD8⁺ T lymphocytes among periglomerular infiltrating cells and link to the prognosis of class III and class IV lupus nephritis. *Arthritis Rheum* 56: 2362–2370.
- Heinlen LD, McClain MT, Merrill J, Akbarali YW, Edgerton CC, et al. (2007) Clinical criteria for systemic lupus erythematosus precede diagnosis, and associated autoantibodies are present before clinical symptoms. *Arthritis Rheum* 56: 2344–2351.
- Haas C, Ryffel B, Le Hir M (1997) IFN- γ is essential for development of autoimmune glomerulonephritis in MRL/lpr mice. *J Immunol* 158: 5484–5491.
- Richards HB, Satoh M, Jennette JC, Croker BP, Yoshida H, et al. (2001) Interferon- γ is required for lupus nephritis in mice treated with the hydrocarbon oil pristane. *Kidney Int* 60: 2173–2180.
- Perez de Lema G, Maire H, Franz TJ, Escribese M, Chilla S, et al. (2005) Chemokine receptor Ccr2 deficiency reduces renal disease and prolongs survival in MRL/lpr lupus-prone mice. *J Am Soc Nephrol* 16: 3592–3601.
- Chang TG, Palanivel VR, Kinjyo I, Schambach F, Intlekofer AM, et al. (2007) Asymmetric T lymphocyte division in the initiation of adaptive immune responses. *Science* 315: 1687–1691.
- Murphy KM, Heimberger AB, Loh DY (1990) Induction by antigen of intrathymic apoptosis of CD4⁺CD8⁺ TCR^{lo} thymocytes in vivo. *Science* 250: 1720–1722.
- Paliard X, West SG, Lafferty JA, Clements JR, Kappler JW, et al. (1991) Evidence for the effects of a superantigen in rheumatoid arthritis. *Science* 253: 325–329.
- Kurts C, Carbone FR, Barnaden M, Blanas E, Allison J, et al. (1997) CD4⁺ T cell help impairs CD8⁺ T cell deletion induced by cross-presentation of self-antigens and favors autoimmunity. *J Exp Med* 186: 2057–2062.
- Sun JC, Williams MA, Bevan MJ (2004) CD4⁺ T cells are required for the maintenance, not programming, of memory CD8⁺ T cells after acute infection. *Nat Immunol* 5: 927–933.
- Aikawa Y, Morimoto K, Yamamoto T, Chaki H, Hashiramoto A, et al. (2008) Treatment of arthritis with a selective inhibitor of c-Fos/activator protein-1. *Nat Biotechnol* 26: 817–823.
- Huang CY, Golub R, Wu GE, Kanagawa O (2002) Superantigen-induced TCR α locus secondary rearrangement: role in tolerance induction. *J Immunol* 168: 3259–3265.
- Mueller PR, Wold B (1989) In vivo footprinting of a muscle specific enhancer by ligation mediated PCR. *Science* 246: 780–786.

Acknowledgments

We dedicate this work to the Late Professor Emeritus Atsushi Okabayashi, a mentor to SS, who introduced us to this area of study. We thank Prof. Masaaki Miyazawa, Department of Immunology, Kinki University School of Medicine, and Prof. Nobuo Saaguchi, Department of Immunology, Kumamoto University Graduate School of Medicine, for useful advice, authorization of results and providing mice. We also thank Dr. Sachiyo Tsuji-Kawahara, Kinki University, for kindly providing β_2 m-deficient mice and Dr. Hideya Igarashi, Kumamoto University Graduate School of Medicine, for kindly providing *rag1/gfp* knock-in mice. We thank Mai Takimoto and Toshie Nakashima, graduate students of our department, for studies of *rag1/gfp* knock-in mice, CDR3 spectratyping and LM-PCR, Dr. Akira Hashiramoto, Division of Rheumatology, Kobe University, for helpful discussions, and Dr. Marc Lamphier for reviewing the manuscript.

Author Contributions

Conceived and designed the experiments: SS. Performed the experiments: KT YM. Analyzed the data: KT YM SS. Wrote the paper: KT SS.